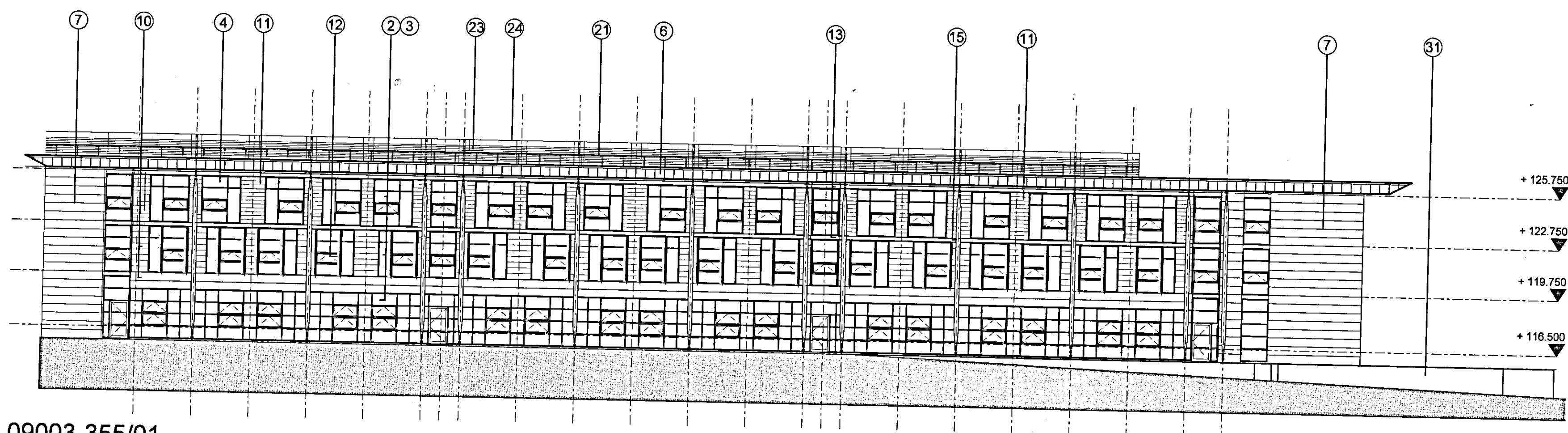
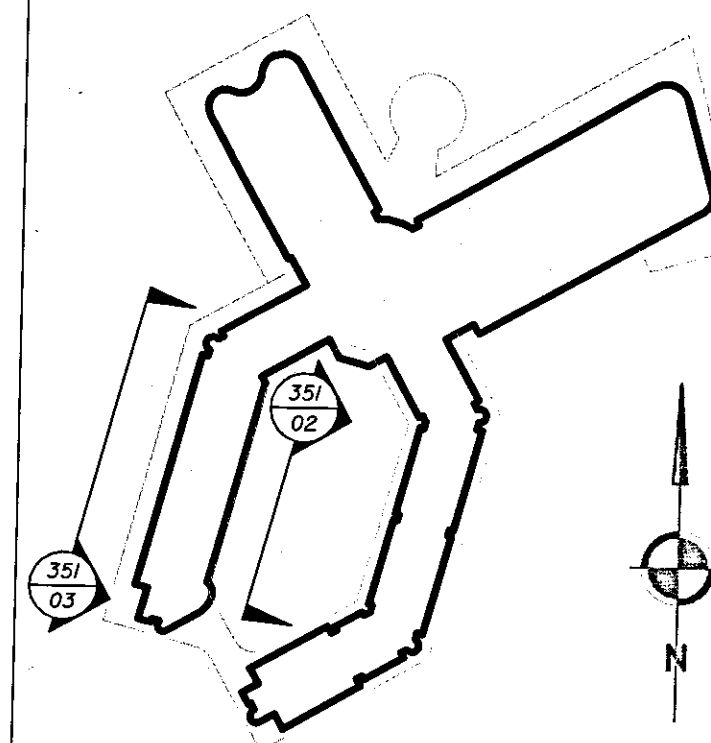
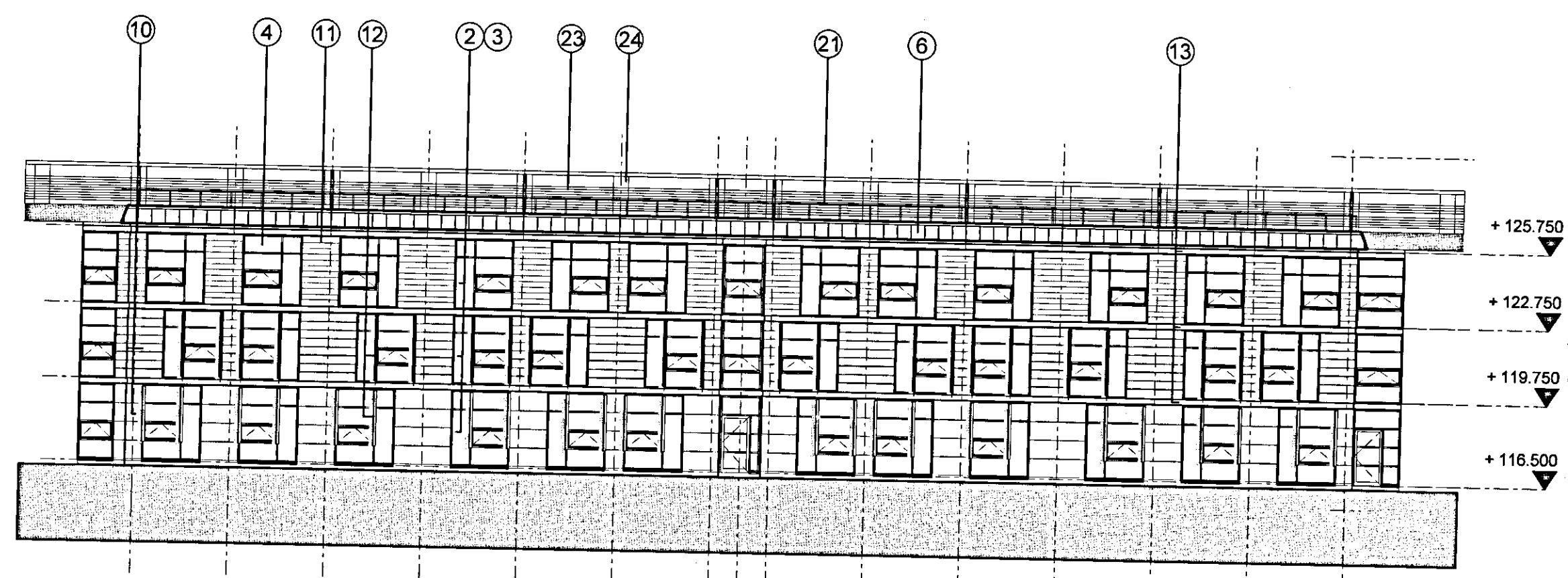


Notes
 1. To be read with CDM Risk Register
 2. Do not scale, check this is the latest version, if in doubt, ask see drawing issue log for issue history

09003-355/03
 Hotel Elevation Location Plan
 Scale: NTS



09003-355/01
 HOTEL BUILDING: WEST ELEVATION: BEDROOM WING
 SCALE 1:200



09003-355/02
 HOTEL BUILDING: PROPOSED WEST ELEVATION TO BEDROOM WING FACING COURTYARD
 SCALE 1:200

MATERIALS LEGEND

- ① Pre patinated copper cladding
- ② PPC curtain walling
- ③ Sealed double glazed units
- ④ Sealed double glazed insulated spandrel panels
- ⑤ Bronze anodised aluminium louvre blades
- ⑥ Pre weathered brass cassette panels to soffits and fascias
- ⑦ Pre weathered brass strip cladding
- ⑧ Pre weathered brass plank cladding
- ⑨ Structural glazing (double glazed)
- ⑩ Stone cladding
- ⑪ Oak strip boarding cladding
- ⑫ Oak solar shading fins
- ⑬ ppc channel
- ⑭ Laminated glass balustrade
- ⑮ Glulam column with engineered steel head and base connection details
- ⑯ Stainless steel bearing to porte cochere
- ⑰ Bronze screen to plant louvres
- ⑱ Roller shutter doors
- ⑲ ppc steel doornet
- ⑳ Standing seam metal deck roofing
- ㉑ Handrail ppc 12 x50 fins
- ㉒ Prepatinated copper rooflight surround
- ㉓ ppc louvres
- ㉔ ppc rainscreen cassette cladding
- ㉕ Kalfel cladding panels in ppc support framework
- ㉖ Painted steel columns with engineered head and base details
- ㉗ Opaque double glazed units
- ㉘ Timber louvres
- ㉙ Tensile opaque fabric roof covering
- ㉚ Gabion walling
- ㉛ Dressed stone walling

P/10/00255

RECEIVED
 24 FEB 2010
 TIME:

B	ISSUED FOR PLANNING	2010/02/12	MC	SG
A	Draft Issue For Comments	2009/11/29	MC	SG
-	First Issue	2009/12/22	DV	BF
Rev	Notes	Date	By	Review

redboxarchitecture

Red Box Architecture, St Nicholas Church, Newcastle upon Tyne, NE1 1RJ
 T: +44 (0)191 245 7105, F: +44 (0)191 245 7111, mail@redboxdesign.com, www.redboxdesign.com
 Red Box Design Group Ltd trading as Red Box Architecture
 redboxdesigngroup : redboxinteriors : redboxgallery

THE NATIONAL FOOTBALL CENTRE ST GEORGE'S PARK			
HOTEL BUILDING West Elevations			
1:200	09 003	355	B
A1	PLANNING		